



## Bucket list experience

Ximuwu Safari Lodge presents a remarkable bucket list experience, tailor-made for individuals, friends, and (grand)children seeking a wheelchair-accessible safari without compromising on luxury. Our exclusive lodge, adorned with five-star amenities, caters to the needs of wheelchair users while maintaining a visually stunning aesthetic. With a wheelchair-accessible airport shuttle bus equipped with ramps and swivel seats, and specially designed game-viewing vehicles featuring slide-out seats, we ensure that every guest can fully participate in the adventure. Discover a world where inclusivity and beauty merge seamlessly, creating unforgettable memories amidst the breathtaking African wilderness at Ximuwu Safari Lodge.

## Factsheet

Wheelchair friendly\*

Exclusive use 6-8 persons

All drinks and meals included

Greater Kruger, South Africa

\*Ximuwu, the only safari lodge with the highest available universal access level



TOURISM GRADING COUNCIL  
OF SOUTH AFRICA AND REGIONAL  
XIMUWU SAFARI LODGE  
WITH THE HIGHEST  
UNIVERSAL ACCESS LEVEL





## WELCOME

We welcome all guests to consider visiting our lodge, regardless of their abilities or disabilities. If you are in a wheelchair or have any other disability, please don't hesitate to contact us. At Ximuwu Safari Lodge, we are committed to providing exceptional service and ensuring that all guests have a comfortable and enjoyable experience. Our dedicated team is ready to assist and accommodate your specific needs. Contact us today to discuss how we can make your safari adventure unforgettable.



+27 (15) 004 0340 landline



+27 (73) 670 5169 (WhatsApp)



info@ximuwu.com

## CONTENTS

- The lodge
- Wheelchair friendly pictures
- The suites
- Activities
- Wheelchair friendly
- Terms & Conditions / Rates





## The Suites

- Approx. 100 square meters
  - 2 single beds convertible to king-size
  - Bathroom with bathtub and shower
  - Outside shower
  - Wheelchair accessible
  - Coffee and tea station
  - Minibar
  - Airconditioning
  - Fan
  - 220Volt 50Hz no load shedding
  - Wi-fi
  - Telephone
  - Self-programmable room safe
  - Separate w/c
  - Alarm clock with Bluetooth music function
  - Wardrobes
  - Private deck
  - l'Occitane amenities
- Free usage of:
- Cooling vests
  - Heated seat covers
  - Height adjustable bed
  - Lifting bed pole/ Bed rails
  - Bath lift
  - Wheelchair (electric or manual)
  - Option of 2 different shower chairs





## The Lodge

- Large swimming pool with pool lift
- Separate toilet for wheelchair user with automatic door opener
- Complimentary Wi-Fi throughout the lodge
- Exclusive use with 6 people possible in 4 luxury suites (maximum 8 guests)
- Air condition and fans
- 2 Fireplaces in main lodge and 1 in each suite
- Open fire pit overlooking the waterhole
- Wood fired pizza oven on the outside deck
- Cinema projector, smart tv in bar
- Full music system throughout the lodge
- Separate room for nurse, pilot or private guide
- Gift shop
- Fitness centre
- On site spa facility
- Laundry service
- Top quality R.O. plant for quality drinking water
- On-site sustainable aquaponics system
- Sleep-out deck/ Not accessible by wheelchair
- Photographic hides fully accessible
- L'Occitane products throughout the lodge
- Fully wheelchair accessible





## Wheelchair friendly with elegance

- All door entrances at least 90cm wide
- Electrically adjustable beds
- Orientation lights in rooms
- Hob-less showers with grabrails
- Open space under vanities
- Separate toilets in bathrooms with handrails
- Separate toilet in main building with electric door opener
- Airport shuttle bus with Braunability swivel chair and wheelchair ramp
- Large sliding doors with fully recessed tracks open to deck
- Sliding seats in game viewer
- Pool lift
- Bath lift
- Electric wheelchair with vertical height adjustment
- All decks and seating places accessible by ramps
- Accessible photo hides
- Telephone





## Activities

- Game drives
- Sound safari
- Night safari with thermal vision
- Bushwalks
- Spa treatments\*
- Helicopter flip\*\*
- Free use of photographic hides
- Free use of our sleep-out deck\*\*\*
- Gym
- Relax at the pool
- Bush breakfast
- Bush dinners

\*60 minutes spa treatment included

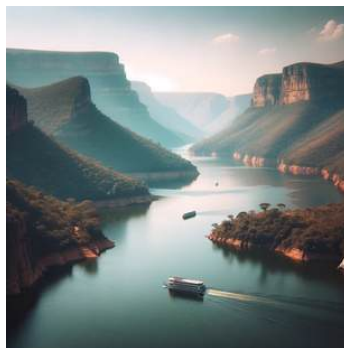
\*\*30 minutes p/p included. Weather permitting

\*\*\*For safety reasons not for guests with a mobility impairment

\*\*\*\*Day trips not included in price

Day trips to: \*\*\*

- Hoedspruit
- Blyde River Canyon
- Hoedspruit endangered species
- Jessica the Hippo



Blyde River Canyon Cruise



## Location

What makes Ximuwu so special is our location

Spend as much time as you like at a sighting, no other cars queuing up

100% Privacy in the lodge as well as during game drive

The Klaserie Private Reserve borders the world-famous Kruger National Park –  
THE safari location

In 1992 the fences separating the Klaserie Private Reserve from Kruger National Park were removed to re-establish natural migration

Today, animals roam freely across the region, and conservation is thriving

Ximuwu is only 20 minutes from the Hoedspruit (Eastgate) Airport or 35 minutes from Hoedspruit

Our friendly staff will greet you upon arrival and transport you back to Ximuwu lodge in either our game viewer or shuttle bus

If you'd prefer to drive from Johannesburg, Ximuwu is approximately 5.5 hours from O.R. Tambo International Airport

Please contact us for directions

Guests with their own private air travel are welcome to fly directly to Ximuwu Airstrip

Ximuwu airstrip is a registered airstrip. 950 meters long

Coordinates S24°18'04" E31°05'03" Elevation 483m (1585Ft)





## TERMS AND CONDITIONS

- Rooms can accommodate two guests.
- Provisional reservations will be held for a maximum of seven days, after which a nonrefundable deposit of 20% will be required for confirmation
- Payment of the balance will be due 60 days prior to travel; bookings with 60 days or less to travel require full payment upon confirmation
- Cancellations made with more than 60 days to travel forfeit the 20% deposit, while cancellations made with 60 days or less to travel forfeit their 100% deposit
- The full invoiced amount of all deposits and payments (including VAT) must clear in our account; kindly ensure that all bank charges are deducted from our account
- All rates are quoted in South African Rand and are subject to change without prior notice. In case of an amendment to the rates, confirmed bookings will be honoured at the rate quoted at the time of confirmation

Suites	Rate 2024	Rate 2025
Per person sharing per night	ZAR 22,000	ZAR 24,000
Single use per night	ZAR 26,000	ZAR 29,000
Exclusive use possible by 6 guests up to 8		
Children 8-12 when sharing a suite with 2 adults	ZAR 8,000	ZAR 9,000
A single child accommodated in their own suite will attract the full adult rate		

Pilot/Nurse room* per guest	ZAR 8,000	ZAR 9,000
-----------------------------	-----------	-----------

\*The Pilot Room is reserved for caretakers, pilots and freelance guides. It does not include game drives and alcoholic beverages

- Ximuwu offers the ultimate luxury experience by allowing you to book per room or reserve the entire lodge for exclusive use. Imagine having this stunning lodge all to yourself, starting with just 6 guests. Whether it is family or friends, your group can enjoy complete privacy and unparalleled luxury in our exclusive setting.
- All bookings are subject to a 3 nights minimum stay
- Children over 8 are welcome
- All meals and drinks included (except imported wines)
- Each guest receives a one-hour spa treatment and a 30-minute helicopter ride included in their price during their stay.
- Conservation levy ZAR 480 (VAT inclusive) per person, per night
- Airport transfer to Hoedspruit airport included
- Gratuities not included



## 2024 Trade Shows



5-9 May 2024  
Cape Town, South Africa



14-16 May 2024  
Durban, South Africa

## 2023 Trade Shows



اكسيبو اصحاب الهمم الدولي  
AccessAbilities Expo

9-11 October 2023  
Dubai, UAE

9-11 May 2023  
Durban, South Africa



22-26 October  
UTAH, USA

## Press Articles

January 2024

Inflight magazine  
A world without barriers



## Press Articles

Released in 2023



Printed Magazine December 2023



**FEATURE STORIES**

**Accessibility meets luxury at Ximuwu Lodge, South Africa**

As an African country of heritage and nature, South Africa has long been a destination for luxury travelers. The Ximuwu Lodge, a luxury resort in the heart of the Drakensberg mountains, is now offering a new level of accessibility for all guests. The lodge's commitment to inclusivity is evident in its accessible rooms, wheelchair-friendly paths, and a range of services designed to ensure every guest has a memorable stay.

**FEATURE STORIES**

**Accessible Journeys**

Travelability magazine's 'Accessible Journeys' issue features a profile on a travel enthusiast who shares her experiences navigating various travel challenges. From accessible transportation to inclusive tourism, the article provides valuable insights for travelers and industry professionals alike.

**FEATURE STORIES**

**Travelability**

The December issue of Travelability magazine highlights the importance of accessible travel. It features a collection of articles, including a feature on Ximuwu Lodge, that explore how the travel industry is embracing inclusivity and creating more welcoming environments for all.



**mélange**

Online publication  
December 26th 2023

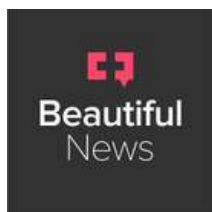
<https://melangeandco.com>

Ximuwu clearly shows that accessible accommodations can be stylish and luxurious. Admittedly, this requires investments in facilities like pool lifts and many other thoughtful adaptations, but collaborating with experts and individuals who have firsthand experience of disabilities will ensure that the end result is something people of every ability can enjoy. Elly acknowledges that awareness is the catalyst for change and initiatives like Accessible Journeys play a pivotal role in educating and enlightening potential travellers about accessible options. She believes the advent of accessible travel guides is a monumental step forward, providing invaluable insights for travellers with disabilities.

The Lodge offers many things of which the owners can be proud, but the crowning jewel of its allure is the absolute independence it offers to wheelchair users. Here, they can navigate the game vehicle, their rooms, and all lodge facilities self-sufficiently. This independence, coupled with the exclusivity and privacy that envelops the lodge, creates a singular and inclusive haven for guests with disabilities, their families and friends.

It is akin to having a cherished home in Africa, a sanctuary where luxury and independence flourish in the embrace of a breathtaking natural canvas.

In the heart of Africa, the owners of Ximuwu Lodge have found their calling. They have fashioned a haven where barriers are shattered. Their journey shows the extraordinary transformations that can arise from awareness. It is a story of compassion, and a steadfast belief in a more inclusive world. Ximuwu is not merely a lodge; it is a legacy of accessibility, luxury and the undying spirit of the wild.



Instagram December 2023

@beautifulnewssa

What makes a holiday truly accessible for people with mobility impairments? When Patrick Suverein, owner of Ximuwu Lodge, underwent back surgery, he not only became temporarily reliant on a wheelchair – he also realised the need to restore dignity to differently-abled travellers. “I found out how difficult it is to travel, especially the way you’re treated as if when you’re in a wheelchair you’re also mentally disturbed,” he recalls. “In airports, they only spoke to my wife. After she mentioned I could speak, they would speak louder or talk to you like you’re a child.” Driven to create a better experience, Patrick together with his wife Elly designed South Africa’s first 100% wheelchair-accessible safari.

Ximuwu Lodge is situated in Klaserie, a private game reserve within the famous Kruger National Park. Here, accessibility isn’t an afterthought but was at the fore of planning. This is evident the moment guests arrive in specially adapted Land Cruisers featuring adjustable swivel seats that can be lowered for wheelchair users to transfer themselves. “So we don’t have to carry the guest as a bag of potatoes into the front seat,” Patrick explains.

**GLOBETRENDER™** Online article september 2023



Online Publication  
December 2023

[www.Trazeetravel.com](http://www.Trazeetravel.com)

Nestled within Klaserie Private Nature Reserve, Ximuwu is a private piece of land of 2,000 hectares. Founded by Netherlands couple Patrick and Elly Suverein, Ximuwu Lodge opened in 2021. Leaving their European life behind, Patrick and Elly embarked on an African odyssey in 2017 and fell in love with the untamed beauty of their surroundings in South Africa. This is the only truly exclusive lodge as you and your guests are the only ones driving on these 6,500 hectares with this being the only commercial lodge in this part of Klaserie Private Nature Reserve.

With the ability to host up to 10 guests at once, including provisions for two wheelchair users, Ximuwu promises an unforgettable experience for all.

A six-hour drive or 45-minute flight from Johannesburg, the lodge stands as a testament to inclusivity and accessibility in South Africa, having received the highest grade of recognition from the South African Tourism Grading Council.



signature luxury  
**TRAVEL**  
& style  
www.Signatureluxurytravel.com.au  
September 2023

## Inside South Africa's first luxury wheelchair-friendly safari lodge

While many safari lodges claim to be 'accessible', Ximuwu Safari Lodge is the first to provide a true luxury experience in a built-for-purpose wheelchair-friendly environment.

Dutch couple Elly and Patrick Suverein fell in love with the bush and wildlife of South Africa 30 years ago. It was their first visit to the country and it ignited a lifelong passion for the region within them. In 2016, Elly and Patrick purchased their own plot of land there, with the intention of building a private home for themselves. It was a decision that led the pair to become leaders in the accessible travel space.



Sky Ways Airlink onboard magazine  
September 2023



BY SOPHIE MORGAN  
24 August 2023

## Beyond Barriers: the world's first luxury wheelchair-accessible safari

The African bush and all of its delights are just waiting to linger in the memories of those who are able to experience her. Now, the world's first luxury wheelchair-accessible safari is ensuring that privilege can belong to everyone.



Defining disability has long been a contentious and polarising endeavour. For some, the word carries a heavy burden; for others, it's a source of pride. Each person's relationship with the label will be as complex, personal and nuanced as their impairments themselves.

There is no single definition, no one size fits all, but in recent years our community has agreed to move away from the medical model of defining disability and towards the social model. This new way of looking at the term outlines that disability is created by society and the environments in which we live – not by our individual impairments. Disabled people face barriers that stop us from participating in society the same way as non-disabled people. So, instead of wanting to fix us and remove our disabilities, the social model instead stipulates that we fix the barriers ourselves

When Patrick Suverein became dependent on a wheelchair due to back complications in 2017, I doubt he had any awareness of the quandaries surrounding these ever-evolving ways of thinking. Regardless, when he temporarily became disabled, his world – namely, a 2000-hectare private game reserve in Klaserie National Park, South Africa – became inaccessible. This left him and his indomitable partner Elly to ask the very question so many wheelchair users before them had grappled with, too: "how do you do a safari in a wheelchair?"

